

WALSH UNIVERSITY

Graduation Outcomes

FIRST DESTINATION
ANNUAL REPORT

Class of 2024

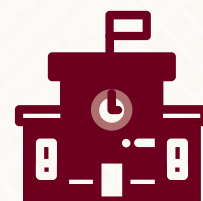
The First Destination Annual Report provides an assessment of graduation outcomes for the preceding graduation class. Prepared by the Office of Alumni & Career Connections, the report provides a detailed breakdown of the status of Walsh University graduates as it relates to employment and/or continuing education. The Office of Alumni & Career Connections acquires its data through direct outreach, online research, and survey distribution and analysis. Highlights for the Class of 2024 include:

CLASS OF 2024



75%
Knowledge
Rate

92%
Undergraduates
Employed or in
Graduate School

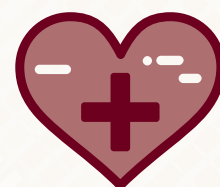


96%
Graduate
Students
Employed



Employed by
more than
230
Employers

46%
in Healthcare
Industries



First Destination Survey Outcomes

First Destination Report for Undergrad and Graduate Class of 2024, defined as Aug. 2023, Dec. 2023 and May 2024 Graduates.

**431 identified of our 574 Graduates
(75% Knowledge Rate)**

August 2023 Graduates	December 2023 Graduates	May 2024 Graduates	Total Reported Graduates
55	97	279	431

Life After Walsh	Undergraduate	Graduate
Landed a full time job after graduation	154	171
Landed a part time job after graduation	14	6
Seeking employment	17	4
Enrolled in a graduate program	58	4
Seeking a graduate program	-	-
Not seeking employment or graduate school	1	-
Americorps/peace corps/service organization	2	-
Serving with the military	-	-
Taking a gap year	-	-
Total	246	185

Career Outcome Rate (NACE)	92%	96%
-----------------------------------	------------	------------

**95% All graduate, all degrees
Career Outcomes**

DeVille School of Business

100% Undergraduate & 100% Graduate
Career Outcome Rate

Number of Undergraduate	Undergraduate Knowledge	Number of Graduate	Graduate Knowledge
62	55	55	49

89% Undergraduate & 89% Graduate
Knowledge Rate

Life After Walsh	UG	UG%	G	G%
Landed a full time job after graduation	45	82%	47	96%
Landed a part time job after graduation	4	7%	1	2%
Seeking employment	-	-	-	-
Enrolled in a graduate program	6	11%	1	2%
Seeking a graduate program	-	-	-	-
Not seeking employment or graduate school	-	-	-	-
Americorps/peace corps/service organization	-	-	-	-
Serving with the military	-	-	-	-
Taking a gap year	-	-	-	-

Byers School of Nursing

**88% Undergraduate & 100% Graduate
Career Outcome Rate**

Number of Undergraduate	Undergraduate Knowledge	Number of Graduate	Graduate Knowledge
78	50	88	65

**64% Undergraduate & 83% Graduate
Knowledge Rate**

Life After Walsh	UG	UG%	G	G%
Landed a full time job after graduation	43	86%	59	91%
Landed a part time job after graduation	1	2%	3	4.5%
Seeking employment	6	12%	-	-
Enrolled in a graduate program	-	-	3	4.5%
Seeking a graduate program	-	-	-	-
Not seeking employment or graduate school	-	-	-	-
Americorps/peace corps/service organization	-	-	-	-
Serving with the military	-	-	-	-
Taking a gap year	-	-	-	-

School of Behavioral and Health Sciences

62% Undergraduate & 76% Graduate Career Outcome Rate

Number of Undergraduate	Undergraduate Knowledge	Number of Graduate	Graduate Knowledge
72	54	81	59

75% Undergraduate & 73% Graduate Knowledge Rate

Life After Walsh	UG	UG%	G	G%
Landed a full time job after graduation	17	31%	54	92%
Landed a part time job after graduation	1	2%	1	1.5%
Seeking employment	6	1%	4	6.5%
Enrolled in a graduate program	30	56%	-	-
Seeking a graduate program	-	-	-	-
Not seeking employment or graduate school	-	-	-	-
Americorps/peace corps/service organization	-	-	-	-
Serving with the military	-	-	-	-
Taking a gap year	-	-	-	-

School of Arts, Sciences, & Education: Arts & Sciences

91% Undergraduate & 100% Graduate
Career Outcome Rate

Number of Undergraduate	Undergraduate Knowledge	Number of Graduate	Graduate Knowledge
68	57	2	2

84% Undergraduate & 100% Graduate
Knowledge Rate

Life After Walsh	UG	UG%	G	G%
Landed a full time job after graduation	27	47%	1	50%
Landed a part time job after graduation	6	11%	1	50%
Seeking employment	4	7%	-	-
Enrolled in a graduate program	19	33%	-	-
Seeking a graduate program	-	-	-	-
Not seeking employment or graduate school	1	2%	-	-
Americorps/peace corps/service organization	-	-	-	-
Serving with the military	-	-	-	-
Taking a gap year	-	-	-	-

School of Arts, Sciences, & Education: Education

61% Undergraduate & 100% Graduate
Career Outcome Rate

Number of Undergraduate	Undergraduate Knowledge	Number of Graduate	Graduate Knowledge
38	27	23	10

71% Undergraduate & 43% Graduate Knowledge Rate

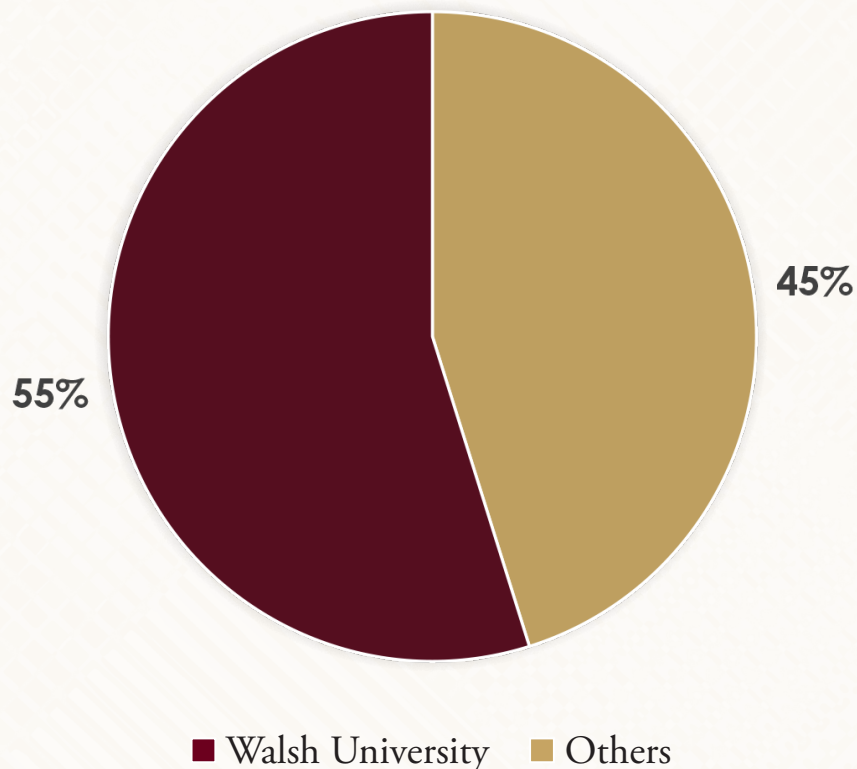
Life After Walsh	UG	UG%	G	G%
Landed a full time job after graduation	19	70%	10	100%
Landed a part time job after graduation	2	7.5%	-	-
Seeking employment	1	4%	-	-
Enrolled in a graduate program	3	11%	-	-
Seeking a graduate program	-	-	-	-
Not seeking employment or graduate school	-	-	-	-
Americorps/peace corps/service organization	2	7.5%	-	-
Serving with the military	-	-	-	-
Taking a gap year	-	-	-	-

Graduate School Destinations

Total Number of Students in Graduate School: 62

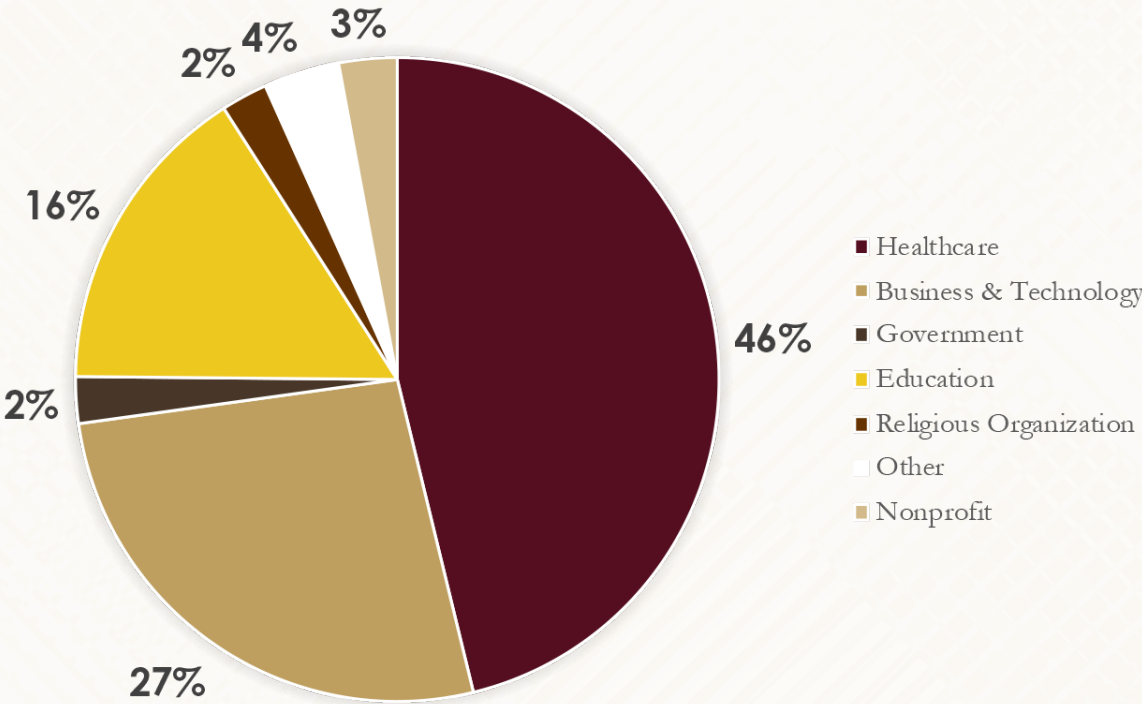
Alvernia University (1)	NEO Med (2)	UC San Diego (1)
Ashland University (1)	Ohio Dominican University (1)	Univeristy of Akron (3)
Barry University (1)	Ohio University (1)	University of Dayton (1)
Bluefield University (1)	Ottawa University Arizona (1)	University of Mount Olive (1)
Case Western Reserve Univ (1)	Palmer College of Chiropractic (1)	University of Mount Union (3)
Cleveland Clinic School of Medical Laboratory Science (1)	The University of Tennessee at Chattanooga (1)	University of Rio Grande-MEd (1)
Cleveland State University (1)	Trevecca Nazarene University (1)	Walsh University (34)
Columbia University (1)	UNC - Charlotte (1)	
Kent State University (1)		

Walsh University vs. Others



Industry Outcomes

Industries	Totals
Business & Technology	91
Education	54
Government	8
Healthcare	158
Nonprofit	10
Other	13
Religious Organization	8
Total Students Employed	342



Top Employers



Perry Local School District



North Canton City Schools

Employer Destinations

415 Group	CareSource	Erie Insurance Group
911 Dispatcher	Carrollton Health and Rehabilitation Center	Excaliber Inc
Accurate Firestop Inc	Catholic Diocese of Youngstown	Experient - Housing Specialist
AdLeg	CBIZ	Family Care Clinic of Bushland
ADP	Chengdu Pandaman	Fanatics
Advent Health Tampa Hospital	Cherry Street Creamery	First Alliance Healthcare
Adventist HealthCare	Childscape Learn & Grow	First Friends Church
AEP	City of Streetsboro	First Light Learning
AF-Group	CLA (CliftonLarsonAllen)	Fleet Response
Ag Design, Medina Turf	Cleveland - FNP	FOX Rehabilitation
Age of Steam Roundhouse Museum	Cleveland Clinic	Frontier Airlines
Akron Art Museum	Cleveland Metro Health System	Full Spectrum Marketing
Akron Brass Fittings	Colonial Trust Company	Gabrael Cancer and Research
Akron Childrens Hospital	Colorado Pain Care	Galvin Therapy Center
Akron Metro Housing Authority	CommQuest	GCI Residential Inc
Allstate	Community Building Partnership of Stark County	General Dynamics Land Systems
Amazon	Construction	General Motors
American Society of Plastic Surgeons (ASPS)	Crossroads Hospice	Gentle Shepherd Counseling
AmeriCorp	Crystal Clinic Orthopedic Ctr	Graystone Consulting
Archbishop Hoban	Cuyahoga Falls Ciy SD	Harbor Freight Tools
Arthrex Cleveland Sales Representative	Dept of Veteran's Affairs Health System	Health Partners of Western Ohio
Asian Services In Action	Diamond Medical Services	Holmes Wayne Electric Cooperative
ATI Physical Therapy	Diebold Nixdorf	Holy Spirit Parish
Aultman Health Foundation	Dominican Sisters of Mary, Mother of the Eucharist	Humana
Aureus Medical Group	Dove Audio Visual	HWS Best Health, LLC
Baldwin Wallace University	Dynamic Foot Care	Indiana University Foundation
Bankers Life	Eastern Michigan Univ	Industrial y Comercial Drugplastics Arcadia Ltda
BDO USA	ECU Health Medical Ctr	Instagram
Belle Stone Elementary School	Educational Service Center of Eastern Ohio	Integrated IT Group
Bellevue Hospital	Edwin Shaw Rehabilitation Institute	Intermountain Centers
Big Brothers Big Sisters of East Central Ohio	Empower Behavioral Health	Invited Clubs at Silver Lake
Bloom on the Square	Encompass Health	J.M. Smucker Co.
Brookside Country Club	Encore Wound Care	Johns Hopkins Aramco Hospital
Buchanan Hauling & Rigging, Inc.	Energizer Holdings	Kenyon College
Cambium Analytica	Enovis	Key Bank
Canton Christian Home	Erie Institute of Technology	Keypath Education
Carepoint Health		Kimble Companies
		Kroger
		Lawrence + Memorial Hospital

LECOM Health Corry Memorial Hospital	Pinnacle Care Providers, LLC	Summa Health System
Legacy Health Services	Pioneer Physicians Network, Inc.	Summit Academy Schools
Locus Fermentation Solutions	Pipeline Social Media	TAH Benefits
Louisville CSD	Plain Local School District	Takeda - Neuroscience Sales Rep
Lyra Health	Plaza Home Mortgage, Inc.	Tanner Real Estate
MAG Resources	Ports Petroleum Co.	Texas Christian University
Mahoning Cty Career and Technical Ctr	Pressure Wash Carolina	The King Faisal Specialist Hospital
Main Street Therapy Partners	Prestwick Country Club	The MetroHealth System
Malone University	Professional Lacrosse Player	The Ohio State University Wexner Medical Center
Marietta Middle School	Prognify Urgent Care	The Sugery Center of Chevy Chase
Maverick Auto Services	ProHealth Care	The University of Akron
McGohan Brabender	ProLink	Thoams Steel Strip Corp.
Medical Arts Hospital	ProTailored Physical Therapy	Thrive Counseling Services
MeiCap Partners LLC	PSI	Timken Company
Mercy Health	Radiant Divine Medspa	TNT Tanning Salon
Metallus Inc.	Raymond James	Top Golf
Mid-City OB-GYN	Regency of Larchwood Nursing Facility & Assisted Living	Triage Staffing
Minute Clinic	Revive Family Counseling	Trinity Health
MJ Care, Inc.	Revvity	U.S. Soccer Referee Program
Mototola Solutions	RN SICU	University Hospitals
National Interstate Insurance Company	Rocky River School District	University of Mount Union
Nationwide Children's Hospital	Rootstown LSD	UPMC Rehabilitation Institute
Newton Township Fire Department	Sage Integrations	US Department of Veteran's Affairs
North Canton CSD	SarahCare Adult Day Services, Inc.	V&V Appliance Parts
Novacare Rehabilitation	Schneider Downs & Co	Veritex Legal Solutions
NSK Industries Inc	Select Physical Therapy	Visiting Nurse Association of South Central Connecticut
Nunc Coepi Ventures	SHC/The Arc of Medina County	Vivid Sign Company
Ohio Atty Generals Office	Sherwin Williams	Volkswagon Financial Services
Old Republic Title	Sol Art Production	Walsh University
Olive Branch Hospice	Springfield LSD	Washington State College of Ohio
Orthopedic Foot and Ankle Clinic	Springside Fire Department	We Are the Ripple
Orville CSD	St Vincent Charity Hospital	Weaver Child Development Center
Osnaburg Local School	St. Francis de Sales School	Wellbe Senior Medical Group of Pennsylvania
OVP Healthcare	St. Mary Seminary	West Branch High School
Pasco	St. Peter Catholic Church	Western Reserve Hospital
Good Samaritan Hospital	St. Thomas Aquinas	Westfield Insurance
Penn Highlands Healthcare	Stark County ESC	Wooster City Schools
Perry Heights Childcare Center	Stark Regional Community Correction Center	Wooster Community Center
Perry LSD	Stark Safety Group	Wound Wise
Personalized Health Partners	State of Ohio Lottery Commission	Young Truck Sales
Physio Balance and Sports Medicine	Strike Force Baseball Academy	
	Subaru of America	



WALSH
UNIVERSITY
EDUCATION FOR LIFE

Alumni
& Career
Connections

2020 East Maple Street | North Canton, Ohio 44720 | www.walsh.edu