

HERTTNA COUNSELING CENTER

Part of Walsh University's School of Behavioral & Health Sciences



HELP IS CLOSER THAN YOU THINK

- ♦ Serving the Community
- ♦ Training Counselors
- ♦ Providing Care

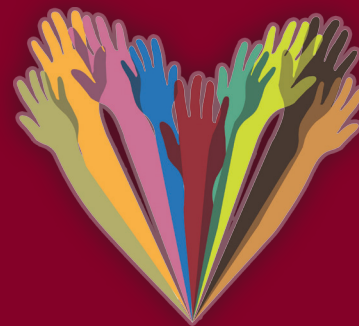
WHERE WE ARE LOCATED

2020 East Maple Street
North Canton, Ohio 44720
Phone: 330.490.7248
Fax: 330.244.4950
Email: fmhcc@walsh.edu
www.walsh.edu

Services are by donation or FREE if you are unable to make a donation.

WE WELCOME

- ♦ Adults
- ♦ Children
- ♦ Adolescents
- ♦ Couples
- ♦ Families



OUR SERVICES

- ♦ Individual Counseling
- ♦ Family Counseling
- ♦ Group Counseling
- ♦ Career Counseling
- ♦ Couples Counseling
- ♦ Assessment
- ♦ Counseling for Military Personnel, Their Families and First Responders

WE HELP WITH

Stress
Burnout
Anxiety & Worry
Depression
Grief & Loss
Poor Self-Esteem
Family and/or
Relationship Problems,
Among Many Other
Mental Health Related
Concerns



WALSH
UNIVERSITY

A Catholic University of Distinction